

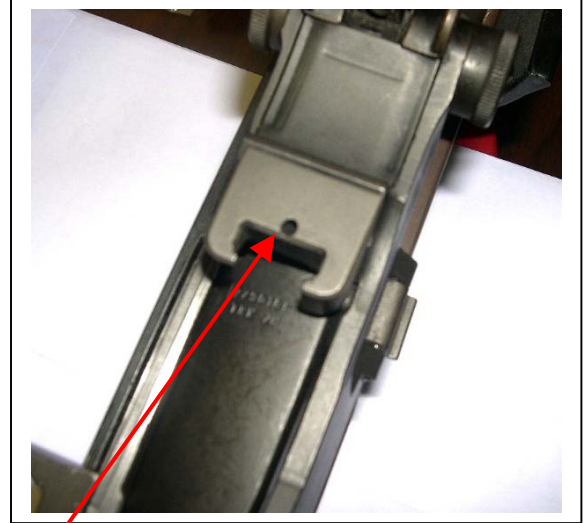
SADLAK INDUSTRIES LLC

Nadeau Industrial Park • 712 Bread & Milk St. Unit 7 • P.O. Box 202 Coventry, CT 06238
Tel. (860) 742-0227 • Fax. (860) 742-4244 • Email sales@sadlak.com • Website www.sadlak.com

M14/M1A STRIPPER CLIP GUIDE REMOVAL prior to Sadlak Scope Mount Installation



Stripper Clip Guide



Stripper Clip Guide Pin Hole

CAUTION

1. **With the rifle pointed in a safe direction, pull back on the operating rod handle and make certain the firearm is not loaded.**
2. **Depress the magazine release.**
3. **Pivot the magazine forward and remove.**
4. **Pull back on the operating rod handle to disengage the bolt stop.**
5. **Allow the operating rod and bolt to close forward.**

IMPORTANT! Remove stripper clip guide with care or damage to receiver may result!

To properly removing stripper clip guide,

- i. Remove receiver from stock.
- ii. From the inside of the receiver, insert a 3/32 diameter or slightly smaller pin punch and gently tap the spring pin out. Do not attempt to remove pin by pushing it into the receiver because of possible burrs on the inside.
- iii. Next support the left side of the receiver with a block of wood. Gently tap the stripper guide on the right side only. Stripper guide is removed from right to left.

CAUTION:

Care should be taken not to use excessive hammer force to remove stripper clip guide. It may cause the receiver to crack at the thin cross-section or other damage to occur.

SADLAK INDUSTRIES LLC

Nadeau Industrial Park • 712 Bread & Milk St. Unit 7 • P.O. Box 202 Coventry, CT 06238
Tel. (860) 742-0227 • Fax. (860) 742-4244 • Email sales@sadlak.com • Website www.sadlak.com

Step 1
Remove Trigger Group



Trigger Group

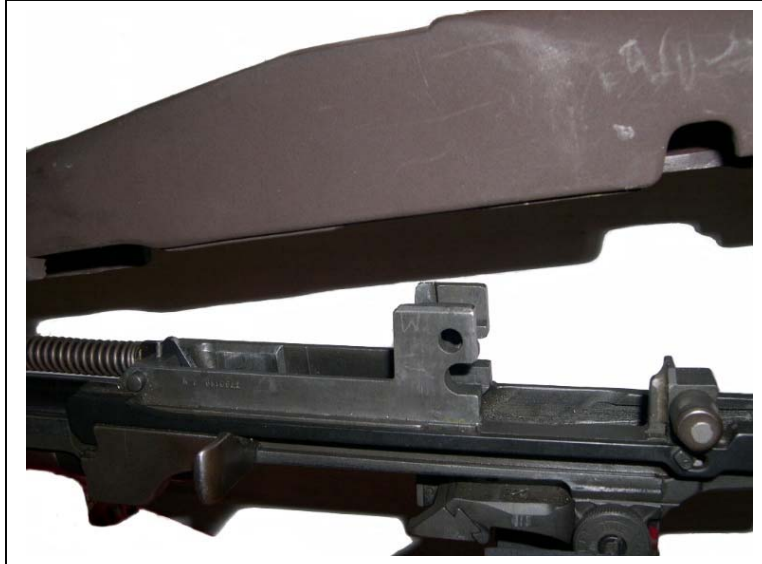
Trigger Group Removal



SADLAK INDUSTRIES LLC

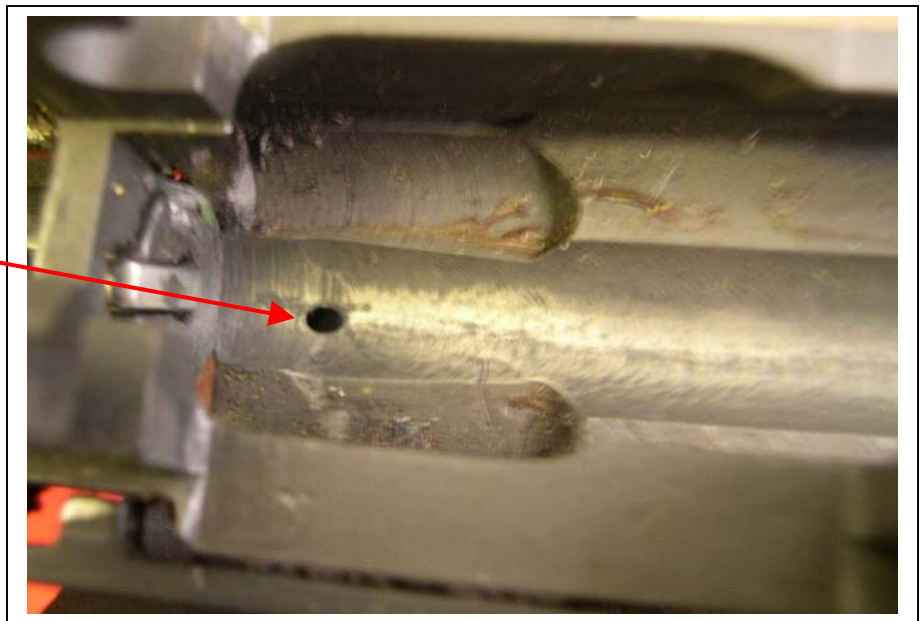
Nadeau Industrial Park • 712 Bread & Milk St. Unit 7 • P.O. Box 202 Coventry, CT 06238
Tel. (860) 742-0227 • Fax. (860) 742-4244 • Email sales@sadlak.com • Website www.sadlak.com

Step 2
Remove Stock



Turn receiver over to view
underside

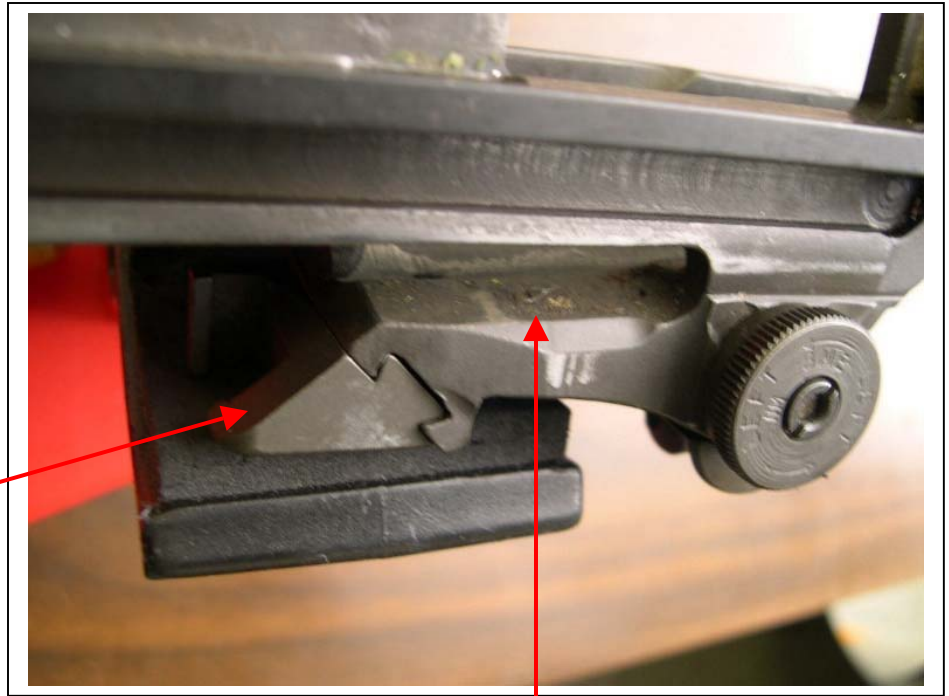
Stripper Clip Guide's
Mating Pin Hole on
underside of Receiver



SADLAK INDUSTRIES LLC

Nadeau Industrial Park • 712 Bread & Milk St. Unit 7 • P.O. Box 202 Coventry, CT 06238
Tel. (860) 742-0227 • Fax. (860) 742-4244 • Email sales@sadlak.com • Website www.sadlak.com

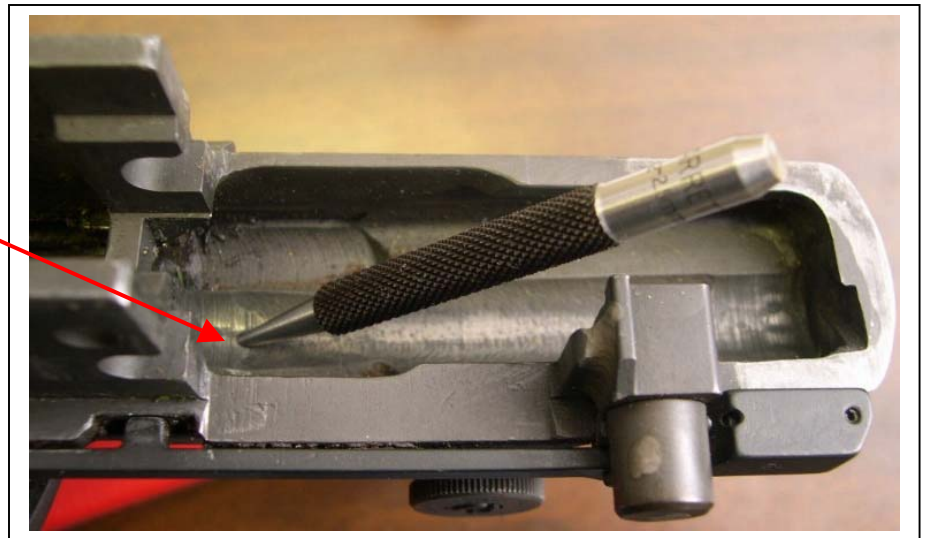
Upside down receiver side view showing Stripper Clip Guide and mating pin hole



Mating Pin Hole

Step 3
Pin Removal

Using 3/32 Pin Punch, carefully drive the pin out through the stripper clip guide.



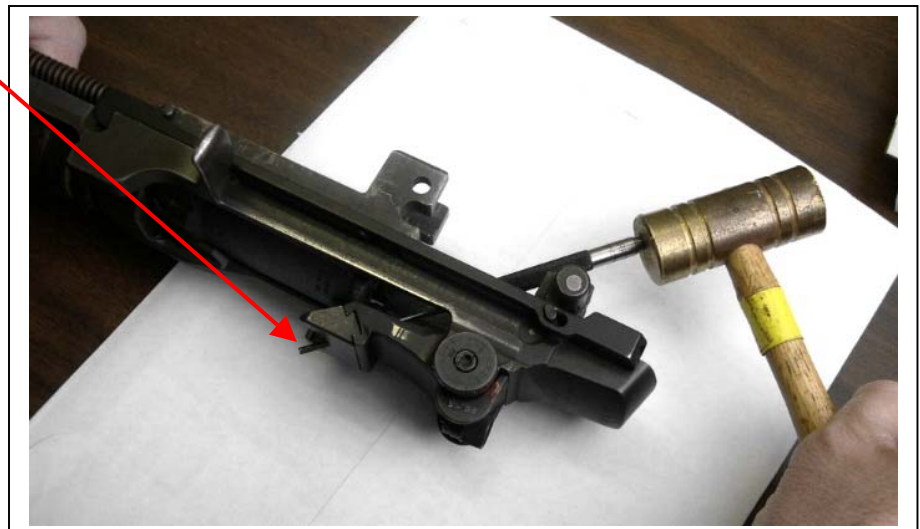
SADLAK INDUSTRIES LLC

Nadeau Industrial Park • 712 Bread & Milk St. Unit 7 • P.O. Box 202 Coventry, CT 06238
Tel. (860) 742-0227 • Fax. (860) 742-4244 • Email sales@sadlak.com • Website www.sadlak.com

Using a rubber or plastic
mallet and the 3/32 pin
punch, **carefully** drive the
pin out



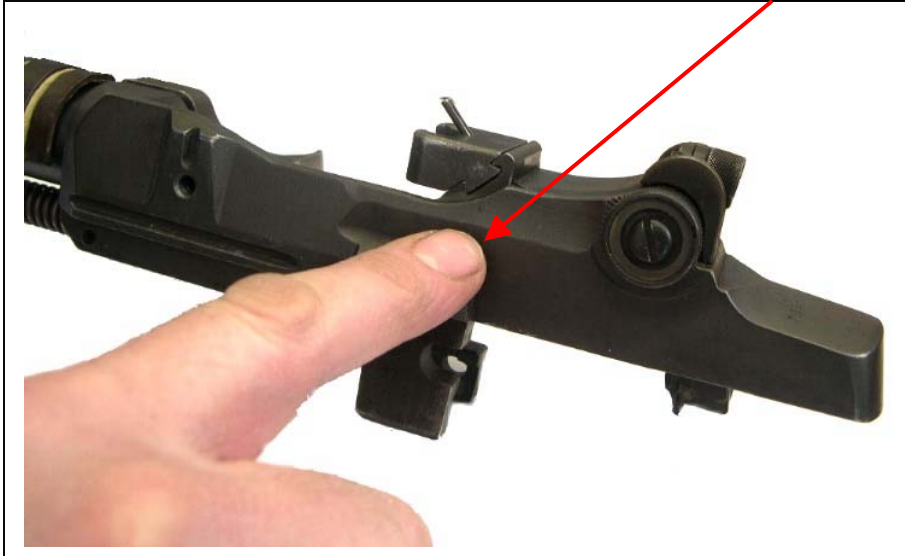
The pin is driven out
through the stripper clip
guide as demonstrated
here



SADLAK INDUSTRIES LLC

Nadeau Industrial Park • 712 Bread & Milk St. Unit 7 • P.O. Box 202 Coventry, CT 06238
Tel. (860) 742-0227 • Fax. (860) 742-4244 • Email sales@sadlak.com • Website www.sadlak.com

To avoid damage, the receiver 's
left side should be supported at
the point illustrated here



With the receiver supported properly
on the left side, a rubber or plastic
mallet can be used to tap the stripper
clip guide out of the dovetail.

IMPORTANT

Carefully tap from right side to left

**Do Not Use Excessive Force as
damage to the receiver may result**



SADLAK INDUSTRIES LLC

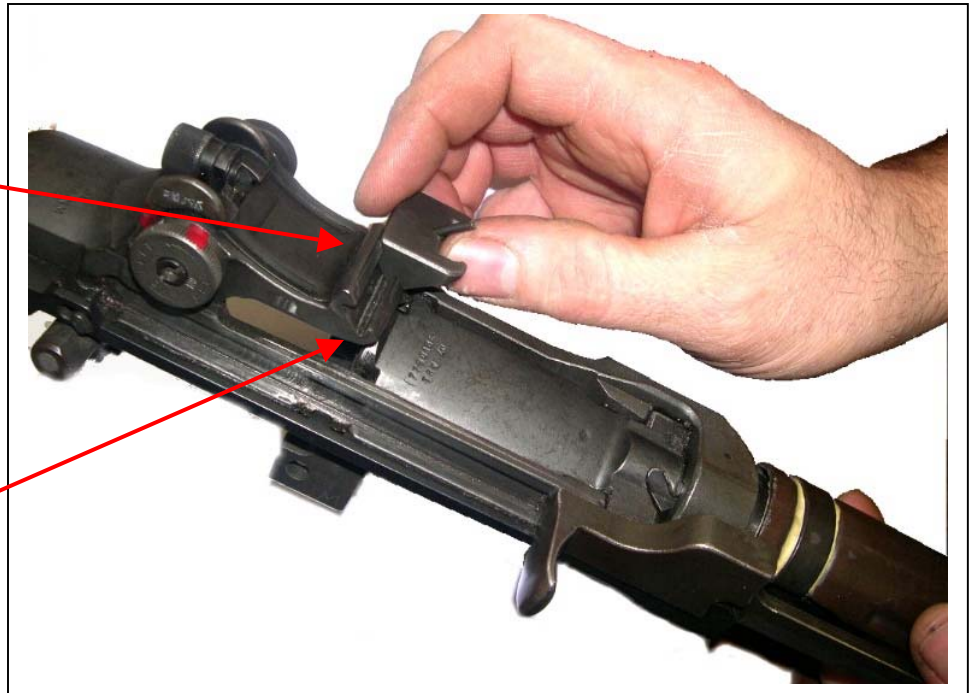
Nadeau Industrial Park • 712 Bread & Milk St. Unit 7 • P.O. Box 202 Coventry, CT 06238
Tel. (860) 742-0227 • Fax. (860) 742-4244 • Email sales@sadlak.com • Website www.sadlak.com

Step 4 Stripper Clip Guide Removal

The final step is to slide
the stripper clip
completely out of the
dovetail.

Check the angled face on the
receiver for nicks or burrs.

If required, use a **fine** file (Good)
or flat honing stone (Better) on
face to assure a flat contact
surface for the scope mount.



The Sadlak Scope Mount can now be installed.