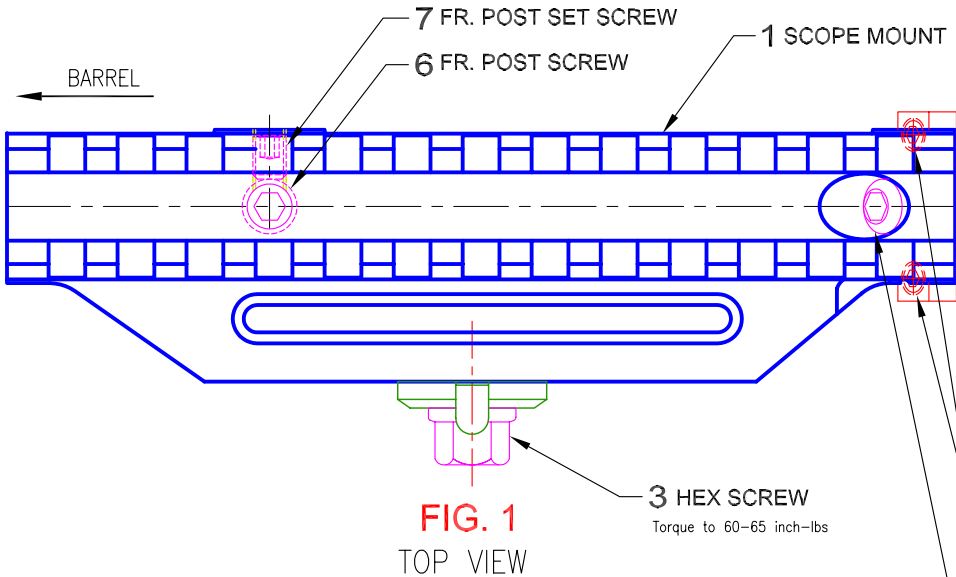


SADLAK INDUSTRIES LLC.

Nadeau Industrial Park Unit 7 P.O.Box 202 Coventry, CT 06238
Tel. (860) 742-0227 Fax. (860) 742-4244

M14/M1A SCOPE MOUNT INSTALLATION DIAGRAM #1



COMPONENT DESCRIPTION

Hardware below is included with each mount. Inspect for missing parts upon receipt.

- 1) M14/M1A SCOPE MOUNT
- 2) CAM WASHER
- 3) HEX SCREW (Torque to 60-65 in-lbs, Use 3/8 Box Hex Wrench)
- 4) CLIP GUIDE KEY
- 5) CLIP GUIDE SCREW (Torque 30-35 in-lbs, Use 5/32 Hex Key)
- 6) FR. POST SCREW (Use 5/32 Hex Key)
- 7) FR. POST SET SCREW (Use 3/32 Hex Key)
- 8) 3/32 HEX KEY WRENCH
- 9) 5/32 HEX KEY WRENCH

FIG. 1
TOP VIEW

NEW FEATURE!!
Securely locks key into dovetail slot
SET SCREWS IN CLIP GUIDE KEY(4)
WARNING! Do not over-tighten. Receiver may break!
Use moderate torque and Loctite #222MS thread locker
Torque to 20inch-lbs MAX.

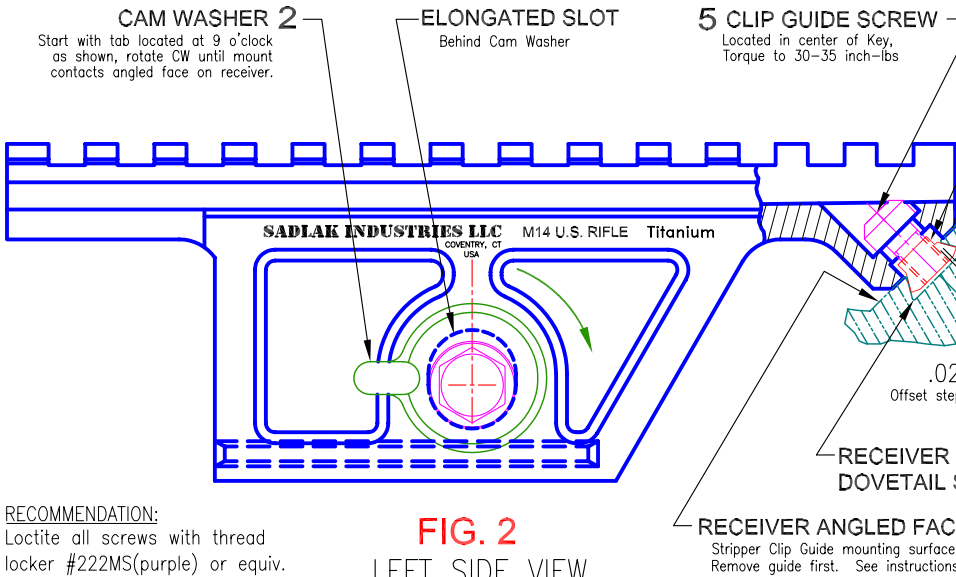


FIG. 2
LEFT SIDE VIEW

RECOMMENDATION:
Loctite all screws with thread locker #222MS(purple) or equiv. for screws under 1/4"

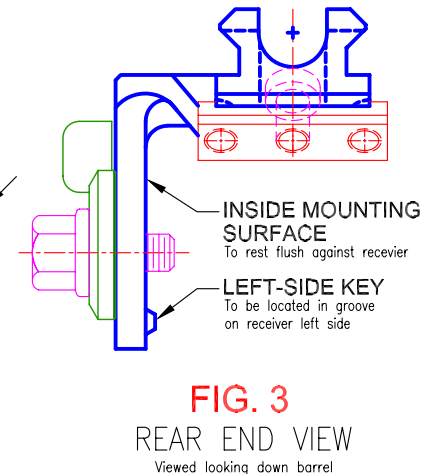


FIG. 3
REAR END VIEW
Viewed looking down barrel

SEE INSTALLATION INSTRUCTION SHEET FOR STEP-BY-STEP ASSEMBLY PROCEDURE.

NOTICE:
Before attempting to install the scope mount on your M1A rifle, first verify the hex screw(3) will screw into the threaded hole on the receiver's left-side. If it will not thread easily by hand, do not force it with a wrench. The threaded hole may have burrs, bad threads or scale from heat treating. To correct the problem, remove burrs with a file or stone and clean with solvent and compressed air. Chase thread, if needed, with a thread chasing screw or a special #12-32 UNEF (extra fine) tap.

Also, Inspect and remove burrs with honing stone on the receiver's left side and in the receiver dovetail slot to assure correct installation of the scope mount. Clip guide key(4) may require hand filing to assure best possible fit in the dovetail slot.

See Back

06/01/2008